



# EAU CLAIRE ENERGY COOPERATIVE RETURNS \$1.4 MILLION TO MEMBERS

**E**au Claire Energy Cooperative (ECEC) has returned over \$1,400,000 to members as a result of an early capital credit retirement authorized by ECEC's Board of Directors. Capital credits are normally retired in October; however, due to the COVID-19 pandemic, the board of directors felt that members could utilize the financial assistance now.

Board Chair Clarence "Butch" Boettcher stated, "We are living in extraordinary times that present many new social and economic challenges for our members. Your cooperative

**"What can we do to help our members now? This is one of those answers."**

**—Clarence "Butch" Boettcher,  
ECEC board chair**

had to change our day-to-day operations to protect our employees, but we also asked the question—what can we do to help our members now? This is one of the answers."

Typically, this money is returned to members in the form of a paper check. For this retirement, the credits

will be applied directly to members' June bill, so be sure to watch for your credit on the bill you receive in early July. Members with a balance forward less than their credits returned will see the remaining credits applied to their July bill and so on until the credits are exhausted.

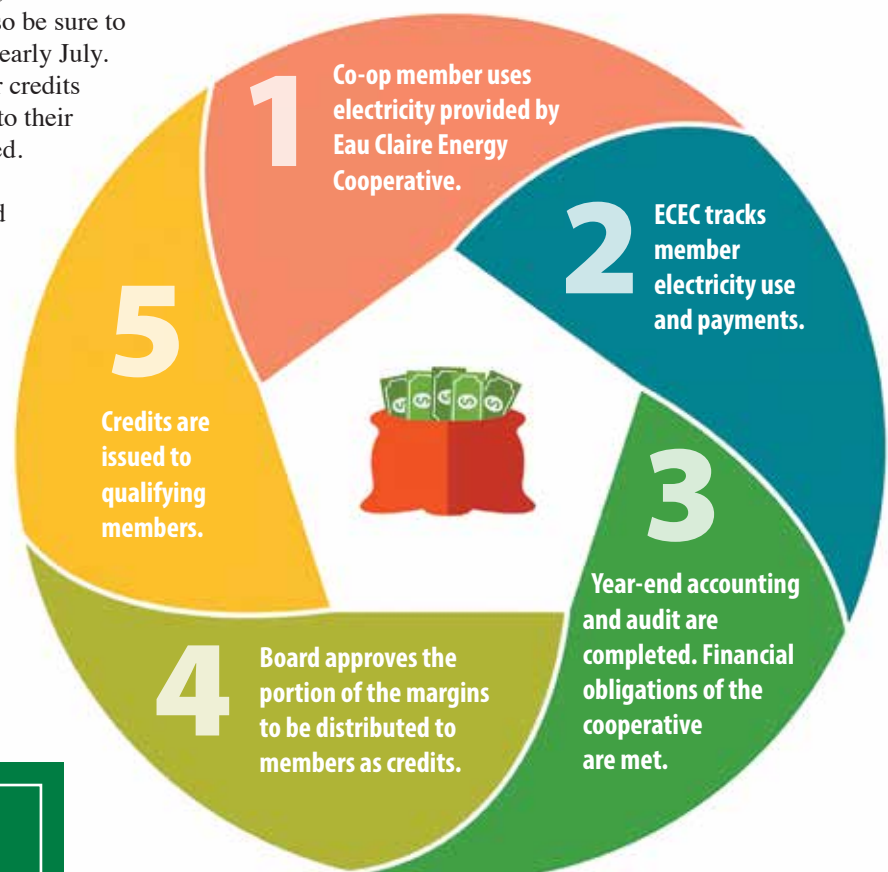
If you compare this year's retirement to last year's, you'll notice that the amount of returned capital credits most likely has increased. The board recognized that many members were confronting financial challenges and wanted to help them out through this unprecedented time. In recent years, the board has typically retired a little more than 3% of members' accumulated credits each year. That amount was increased to 5% this year.

## How does the process work?

Capital credits are a unique benefit of your cooperative membership. Since 1938, over \$19 million has been returned to our members!

As you pay your monthly electric bills, Eau Claire Energy Cooperative uses the income to grow, operate, and maintain a safe and reliable electrical system. Any money received over and above the cost of doing business is called margins. Your portion of the margins is then returned to you in the form of credits. In co-op utilities the profits are returned to you, the consumer-members. In other types of utilities, the profits go to a select group called stockholders.

- Your share of the cooperative's margins in a given year is called your allocation. That allocation is based on the amount of energy you paid for during the year.
- Credits accumulate in an account in your name. When the board of directors approves a retirement of credits, they are approving the return of a specific percentage to be distributed to you. Credits are then issued to qualifying members.



**Since 1938, over \$19 million has been returned to our members!**



# IN TIMES OF UNCERTAINTY, WE ARE COMMITTED TO KEEPING THE LIGHTS ON

**F**or a child, darkness can be scary. Waking up in the middle of the night, the imagination runs wild with every shadow or noise. But, when a light turns on, everything is better, and they see it is going to be okay.

At Eau Claire Energy Cooperative we want you to have the same peace of mind any time you need to turn on a light in your home. We are committed to keeping the power flowing to your home or business. Among many other things, electricity keeps your phones and tablets charged so you can safely connect with friends and family through calls or video chats.



As your local electric cooperative, we are committed to our mission of providing reliable and safe electricity to our members. Reliability is our wholesale power provider, Dairyland

Power Cooperative, taking steps to ensure their plant and system operators, field crews and maintenance staff have the right Personal Protective Equipment (PPE) and procedures in place to continue operations safely and smoothly.

Reliability is having our own lineworkers and dispatchers on-call 24 hours a day, 365 days a year, to keep your lights on. We ensure our employees who respond to power outages and maintain our system can do so quickly and safely.



In 1936, Congress passed the Rural Electrification Act, which allowed the federal government to make low-cost loans to farmers who united to create not-for-profit electric cooperatives. In the midst of the Great Depression, our founders believed so strongly in their vision of electricity for all that they sacrificed time away from their farms and families to – literally – build the cooperative we are today. For many, it would be years before their homes would be able to flip a switch and brighten a dark room. But they persevered during dark times. And so will we.

We don't take our responsibility to continue their work lightly. Even as our world changes, we remain focused on ensuring our actions and plans keep your lights on. We are transitioning to more renewable energy in our generation portfolio, which is exciting. As that happens, we are working with



Lineworker Lee upgrading infrastructure along County Road D.

Dairyland to keep reliability, safety and affordability at the forefront of the decision-making process.

Eau Claire Energy Cooperative stands by our mission to provide safe and reliable service and our goal to be your trusted energy advisor. Whether a severe storm or a pandemic, we are committed to being here for you – our valued members – and our communities. Please reach out to our cooperative employees if you have questions regarding your bill, energy efficiency tips or if you just need to talk. Power On.

# #POWERON



## *We've moved! Temporarily.*

As of July 1, our lobby and administrative offices have moved to the lower level of 2004 Highland Avenue in Eau Claire as our headquarters is undergoing a significant building remodel. Our contact information remains the same. The drop box remains at headquarters and is accessible from N Elco Road. Watch for signs.



## **SHEEP ARE BACK IN THE SOLAR ARRAY**

For the fourth year, ECEC has partnered with the Klindworth family and Lambalot Acres farm to bring ewe lambs to graze in the MemberSolar community solar field. In mid-May, 15 woolly, grass-eating machines were dropped off to do their summer job of vegetation management. It is an arrangement that benefits both parties as the sheep have a place to graze and they keep the grass from getting too tall around the solar panels.

Most summers, the MemberSolar sheep are a popular attraction for classroom field trips and group tours; however, due to the pandemic the sheep will likely enjoy a quiet summer of munching with regular visits and monitoring by the Klindworth family and ECEC employees.



**MY CO-OP**

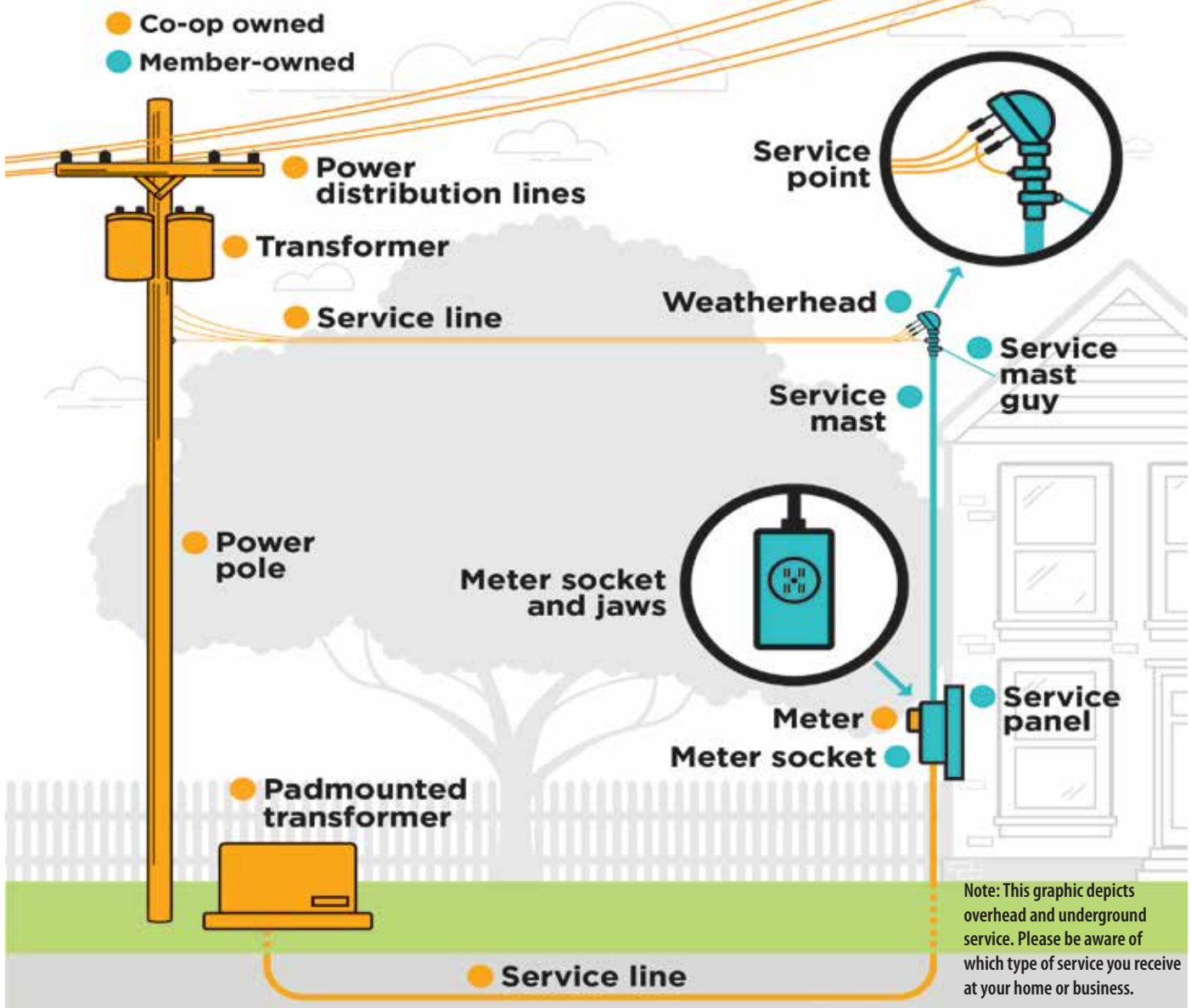




# Who Owns What?

## Electric Co-op Owned Equipment vs Member-Owned Equipment

This graphic depicts equipment owned by the co-op (in gold) and the member (in blue). If a storm damages any equipment owned by the co-op, we are responsible for repairs. If a storm damages any member-owned equipment, the member is responsible for repairs. Members should hire a licensed electrician when making any repairs to member-owned equipment.



### **Eau Claire Energy Cooperative**

Your Touchstone Energy® Partner



**Lynn E. Thompson, President/CEO**

**Monica Obrycki, Chief Administrative Officer**

**Lobby address:** 2004 Highland Ave, Eau Claire, WI 54701

**Mailing address:** PO Box 368, Fall Creek, WI 54742

www.ecec.com

**Office Hours:** 7:30 a.m.–4 p.m. Mon–Fri

**Non-emergencies:** 715-832-1603

**Emergencies & outages:** Toll FREE 800-927-5090

24 hours a day, 7 days a week

**Diggers Hotline:** 811 or 1-800-242-8511