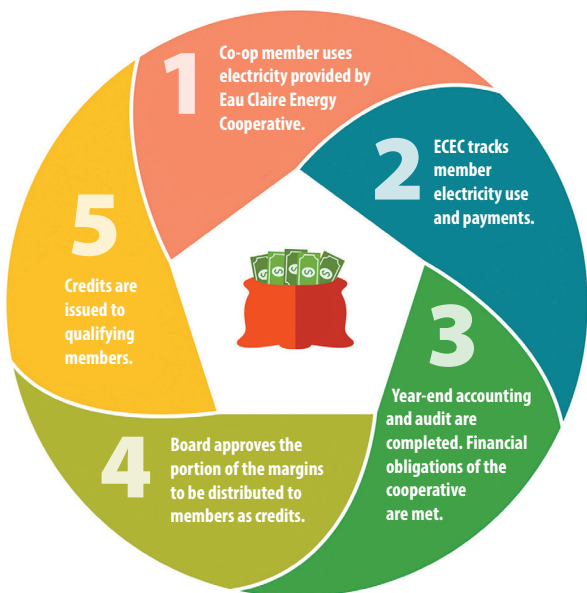


Capital Credits Retired Early

- \$1.4 million returned to members
- Credits normally retired in October were moved to June in response to COVID-19
- For this special retirement: on-bill credits only, no paper checks
- Credits will be applied to the June bill and carried over to future months until credits are exhausted
- See www.ecec.com for details

"We are living in extraordinary times that present many new social and economic challenges for our members. Your cooperative had to change our day to day operations to protect our employees, but we also asked the question - what can we do to help our members now? This is one of the answers."

- Board of Directors Chair, Clarence Boettcher



Eau Claire Energy Cooperative

Your Touchstone Energy® Partner 
PO Box 368 Fall Creek, WI 54742
715-832-1603
www.ecec.com 

We've moved! Temporarily.

Our headquarters building off of Highway 12 is undergoing a significant remodel, so our offices have moved offsite for the next 4-6 months. The temporary office is located on the lower level of the Regis Court Professional Building located at 2004 Highland Avenue, Eau Claire.

Temporary lobby address:

2004 Highland Avenue
Eau Claire, WI 54701

Phone: 715-832-1603

Email: info@ecec.com

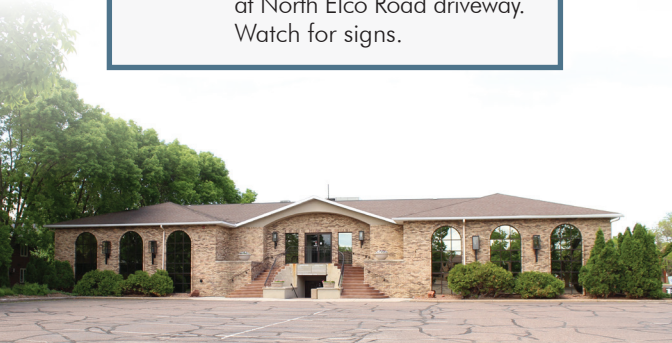
Mail: PO Box 368
Fall Creek, WI 54742

Office hours:

7:30 AM – 4:00 PM, M-F

Drop Box:

Remains at headquarters
at North Elco Road driveway.
Watch for signs.



Your Trusted Energy Advisor

Eau Claire Energy Cooperative

Your Touchstone Energy® Partner 
PO Box 368 Fall Creek, WI 54742

715-832-1603

www.ecec.com

