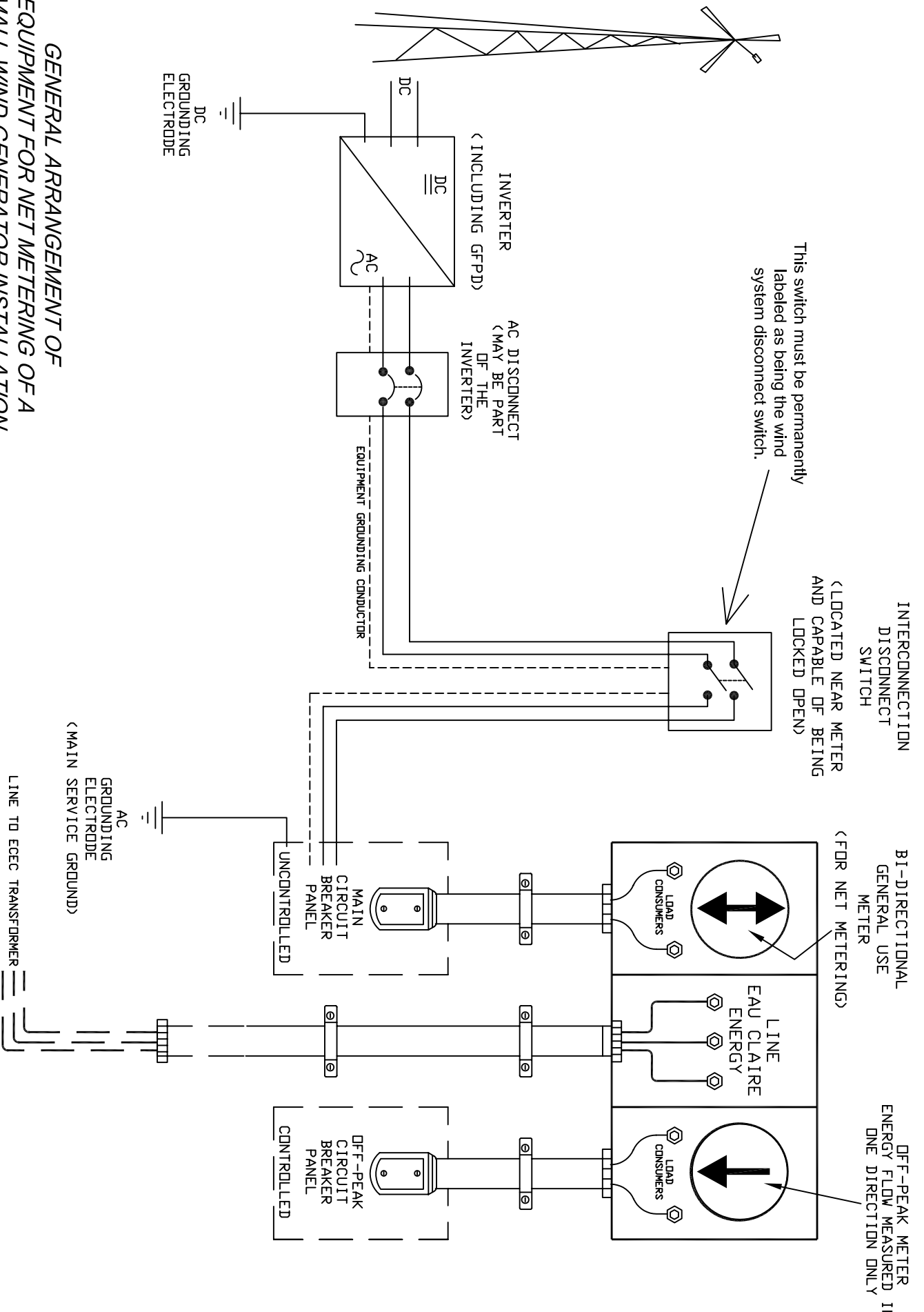


**GENERAL ARRANGEMENT OF
EQUIPMENT FOR NET METERING OF A
SMALL WIND GENERATOR INSTALLATION
-SELF CONTAINED METERS-**



This switch must be permanently labeled as being the wind system disconnect switch.

INTERCONNECTION DISCONNECT SWITCH
< LOCATED NEAR METER AND CAPABLE OF BEING LOCKED OPEN >

BI-DIRECTIONAL GENERAL USE METER
< FOR NET METERING >

OFF-PEAK METER ENERGY FLOW MEASURED IN ONE DIRECTION ONLY