

Sign up for Youth Ambassadors, page 4

EAU CLAIRE ENERGY COOPERATIVE

Wisconsin

ENERGY COOPERATIVE

MONTHLY SINCE 1940

SEPTEMBER 2008

News



Everyone wants to save energy.
We want to help.

**Eau Claire Energy
Cooperative**

Your Touchstone Energy® Partner 



focus on energy™

The power is within you.



CASH BACK INCENTIVES

for ENERGY STAR Appliances from Eau Claire Energy Cooperative

Cash Back Incentives available NOW!

Get cash back from Eau Claire Energy Cooperative when you purchase any qualifying ENERGY STAR appliances. You are not limited to any brand you purchase as long as it carries the ENERGY STAR label. You not only save money on your new appliance, but you'll reap the benefits of lower energy use when you use your new ENERGY STAR appliances. Any of the following qualifying ENERGY STAR appliances purchased between January 1, 2008, and December 31, 2008, qualifies.



How much can you earn?

ENERGY STAR clothes washer	\$50.00
ENERGY STAR refrigerator	\$25.00
ENERGY STAR room	\$25.00
air-conditioning unit	



How to qualify:

To qualify for these cash back incentives, you must be a member of Eau Claire Energy Cooperative. That means you purchase the electricity for your home or business from Eau Claire Energy Cooperative.

How to get your energy incentive:

To qualify and obtain your energy incentive you must:

1. Be a member of Eau Claire Energy Cooperative (purchase your electricity from ECEC).
2. Go to www.ecec.com and print out the Incentives Form. Mail it to Eau Claire Energy Cooperative with a copy of your sales receipt and a copy of the ENERGY STAR label.
3. Qualifying ENERGY STAR appliance must be purchased between January 1 and December 31, 2008. All forms must be received at Eau Claire Energy Cooperative by January 31, 2009.
4. Appliance must be an ENERGY STAR rated appliance.
5. Incentive will be credited to member's energy account at Eau Claire Energy Cooperative and will be described on your monthly statement.

Looking for additional incentives?

If you are looking for additional cash back incentives, check out the Focus on Energy web site at www.focusonenergy.com, or call them at 800-762-7077. A listing of ENERGY STAR rated products is available online at www.energystar.gov.

Eau Claire Energy Cooperative

Your Touchstone Energy® Partner 

715-832-1603 • 888-832-1604

www.ecec.com



"This program is not only influential but it gives back to you in every day life. Plus the food is AMAZING!"

Samantha Becker, Youth Ambassador, Mondovi High School

ECEC Youth Ambassadors relax after an evening of volunteering at Hope Gospel Mission Bargain Center. Throughout the year the Youth Ambassadors make plans to perform community service at many non-profit organizations. Pictured from left to right are Brandon Withers, Drew Lehmann, Tabitha Rueber, Hannah Rueber, and Josh Howard.

Youth Ambassadors Begin Fourth Year

The Youth Ambassador Program will begin its fourth year of learning about energy issues, polishing leadership skills, and performing community service. Since 2005 over 70 students have participated in the program.

The Eau Claire Energy Cooperative's Youth Ambassador Program is an exciting program designed to help area high school students learn firsthand many leadership skills necessary in life. Students will learn about cooperatives and energy issues and plan community service projects. Eight monthly meetings plus community services are scheduled from September through May (no meeting in December).

Regular monthly meetings are scheduled for the third Wednesday of the month from 12:00 noon to 1:30 p.m. at the cooperative headquarters on Hwy. 12 between Eau Claire and Fall Creek with lunch provided for the students. The first meeting this fall is set for Wednesday, September 17, 2008. See the entire list of dates on our web site.

How to Qualify:

To become a Youth Ambassador students must:

1. Live in a household that receives electricity from Eau Claire Energy Cooperative.
2. Be committed to attend and participate in the Youth Ambassador meetings and community service activities during the program year of September through May.
3. Be a sophomore, junior, or senior at an area high school in Eau Claire Energy Cooperative's service area. You can find the list at www.ecec.com.

How to Sign Up:

Sign up today at www.ecec.com. Click on the Youth Programs tab for more information and to access the enrollment form. Questions? Call us at 715-836-6471. ■

Candidates Energy Forum

**Tuesday,
October 14, 2008**

**10:00 to 11:30 a.m.
The Plaza Hotel & Suites
1202 W. Clairemont Avenue
Eau Claire, WI**

**This is your chance to ask your
legislators for straight answers
to your tough questions
about energy issues prior to
the November elections.
Start the dialogue.**

Sponsored by:

**Eau Claire Energy
Cooperative**

Your Touchstone Energy® Partner

**The
Chamber**
Eau Claire Area



Late summer and early fall often finds many of us working outdoors before the weather turns cooler, but these outdoor chores require caution, especially around electricity. Faulty extension cords are a common source of injury, as are metal ladders coming into contact with overhead power lines.

Following are few safety tips to follow when working outside:

Extension Cords and Power Tools

- Check power tools and electrical cords to make sure they are in good repair, and only use power tools outside that are designed for outdoor use.
- Extension cords should also be designed for outdoor use. They are thicker, more durable, and have features for preventing moisture damage.
- Use only three-wire extension cords with three-pronged plugs.
- Check the amperage rating of the extension cord to make sure it's large enough to meet the power demand of the tool.
- Do not plug one extension cord into another. Use the proper length for the job.
- Unplug extension cords when you are finished using them. Never leave an open extension cord plugged into an outlet.

(Continued on page 28 ►)

Labor Safely

(Continued from page 5)

Ladders:

- Use fiberglass or wooden ladders when working around overhead wires or other electrical sources. Metal ladders conduct electricity and can kill anyone who is touching the ladder if it comes into contact with electricity.
- If you must use a metal ladder, carefully check the location of all overhead power lines to avoid contacting the wire or touching the ladder to something that touches the electrical source, such as a tree branch.
- Lower a ladder before carrying or moving it.
- Never work on a windy day, as a gust of wind could shift a ladder into an overhead power line.
- When placing a ladder on the ground, make sure the distance to the nearest overhead power line is at least twice the length of the ladder.
- Make sure to place a ladder on solid level ground to prevent sliding.

Sources: Consumer Product Safety Commission, www.cpsc.gov; Central Alabama Electric Cooperative, www.caec.com ■



Did you know co-op members can help minimize power costs by conserving energy during periods of peak electric demand?

The increasing demand for electricity is causing electric costs to rise, since power needs must be met by high-priced generation. To help save money, we ask that co-op members voluntarily reduce their energy consumption between the hours of 4 and 8 p.m. Please wait until after 8 p.m. before using major appliances.

Wait 'til eight is not an emergency alert indicating a shortage of electricity or line overloading. We simply want you to be aware that you can make a difference by using energy wisely. ■

Energy Assistance is Available

If you need assistance paying for your heating this winter, help may be available through your county energy assistance program. Don't miss the chance to receive financial help on your energy costs, including propane gas and electricity. If you feel you qualify for energy assistance, call the county agency where you live. Applications are being taken October 1–May 15. Additional crisis services are available all year.

Eau Claire County	715-839-6905
Chippewa County	715-726-7840
Clark County	715-743-5233
Jackson County	715-284-4301
Dunn County	715-232-1116
Buffalo County	608-685-4412
Pepin County	715-672-8941
Trempealeau County	715-538-2311
Starting Points (Chippewa Co.)	715-726-7937
Western Dairyland	715-836-7511

Eau Claire Energy Cooperative

John W. Luehrsen, CEO
 Mary Kay Brevig, Editor
 8214 Hwy 12 PO Box 368
 Fall Creek, WI 54742-0368

Office Hours: 7:30 a.m.–4 p.m. Mon–Fri

Non-emergencies: 715-832-1603
 Toll FREE 888-832-1604

Emergencies & outages: Toll FREE 800-927-5090
 24 hours a day, 7 days a week

Diggers Hotline: 1-800-242-8511
 Call 3 working days before you dig.

Eau Claire Energy Cooperative

Your Touchstone Energy® Partner 



Everyone wants to save energy. We want to help.

Call Focus on Energy for expert advice on saving energy and possible Cash-Back Rewards when:

- Replacing your appliances
- Making home improvements
- Choosing efficient lighting
- Building a new home
- Utilizing renewable energy
- Upgrading heating & cooling equipment

Income-eligible customers may qualify for financial assistance to complete energy efficient home improvements.

Contact us today.
800.762.7077 focusonenergy.com





We're planting seeds of efficiency in Wisconsin.

Discover how you can be energy efficient in your field. Focus on Energy partners with you and your equipment dealer to increase the energy efficiency of your operation. The results...reduced energy use, increased productivity and wider profit margins. We're committed to Wisconsin's agriculture industry.

Our energy experts can help increase the efficiency of:

- Dairy Farms
- Greenhouses
- Grain Drying
- Irrigation
- Vegetable Storage
- Animal Housing and Comfort

To learn more about the technical support we provide and new financial incentives that are available, contact Focus on Energy at **800.762.7077** and ask to speak with a member of the Agriculture and Rural Business Team.

Focus on Energy, a statewide service, works with eligible Wisconsin residents and businesses to install cost-effective energy efficiency and renewable energy projects. We provide technical expertise, training and financial incentives to help implement innovative energy management projects. We place emphasis on helping implement projects that otherwise would not get completed, or to complete projects sooner than scheduled. Our efforts help Wisconsin residents and businesses manage rising energy costs, protect our environment and control the state's growing demand for electricity and natural gas.



focus on energy™

The power is within you.

800.762.7077 focusonenergy.com

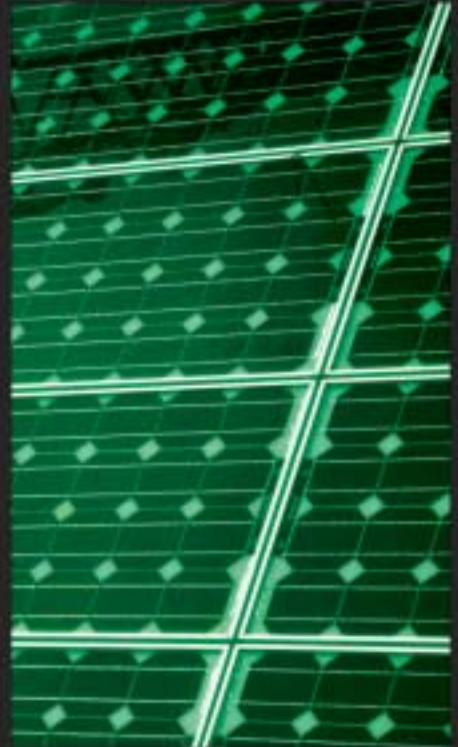
©2007 Focus on Energy BP-8025-0107



Residential



Business



Renewable

Make energy efficiency part of your world.


Focus on Energy promotes energy-saving ideas for Wisconsin residents and businesses. Visit focusonenergy.com or call 800.762.7077. What can green do for you?



focus on energy™

The power is within you.

**Eau Claire Energy
Cooperative**

Your Touchstone Energy® Partner 

www.ecec.com